

**DEDICATION SERVICE**  
**of**  
**New & Additional Facilities**  
**of**  
**PEACE EVANGELICAL LUTHERAN CHURCH & SCHOOL**  
**1007 Stonehaven Drive**  
**Sun Prairie, Wisconsin**

---

**WELCOME TO WORSHIP**

We love that you are here today! We pray that your time with us today will bring you closer to your Savior and to the believers with whom you worship.

**RESTROOMS**

Restrooms are located to the right as you exit into the main hall or straight across the main hall into the school.

**QUIET ROOM**

The library in back serves as a quiet room for parents with little children.

**WE ARE HONORED BY YOUR PRESENCE**

We would like to acknowledge your time with us today. Would you please fill out a "Connection" card from the pocket of the seat in front of you and drop it in the offering plate during the service? Thank you!

**WE ARE GRATEFUL**

We are grateful to the bell choir from Eastside Evangelical Lutheran Church, Madison for celebrating with us and beautifying our dedication service today! They agreed to come at our special request. May God bless their time with us.

# Order of Service

## **PRESERVICE - EASTSIDE BELL CHOIR**

*When Morning Gilds the Skies*  
Arr. Karen Roth

## **OPENING HYMN**

*Christ Is Our Cornerstone / 528*

Please stand for verse 4.

1) Christ is our cornerstone;  
On him alone we build.  
With his true saints alone  
The courts of heav'n are filled.  
On his great love  
Our hopes we place  
Of present grace  
And joys above.

2) Oh, then, with hymns of praise  
These hallowed courts shall ring!  
Our voices we will raise  
The Three in One to sing  
And thus proclaim  
In joyful song,  
Both loud and long,  
That glorious name.

3) Here, gracious God, do now  
And evermore draw near;  
Accept each faithful vow  
And all your children hear,  
And more and more  
On those who pray  
Each holy day  
Your blessing pour.

4) Here may we gain from heav'n  
The grace which we implore,  
And may that grace, once giv'n,  
Be with us evermore  
Until that day  
When all the blest  
To endless rest  
Are called away!

## DIALOGUE

P: In the name of the Father and of the Son and of the Holy Spirit. (Matthew 28:18)

**C: Amen.**

O Lord, our Lord, how majestic is your name in all the earth! (Psalm 8:1)

**Shout for joy to the Lord, all the earth.** (Psalm 100:1)

From the lips of little children and nursing babies you have prepared praise.  
(Matthew 21:16)

**Let everything that has breath praise the Lord.** (Psalm 150:6)

Worship the Lord with gladness. (Psalm 100:2)

**Enter His courts with praise.** (Psalm 100:4)

Who may stand in His holy place?

**The one who has clean hands and a pure heart.** (Psalm 24:3,4)

Certainly, I was guilty when I was born.

**I was sinful when my mother conceived me.** (Psalm 51:5)

Hear the supplication of your people when they pray toward this place.

**Hear from heaven and when you hear, forgive.** (1 Kings 8:30)

Blessed be the Lord. Day by day he bears our burdens. He is the God who saves us.

**Our God is a God who saves. From God the Lord comes escape from death.**  
(Psalm 68:19,20)

As distant as the east is from the west,

**so far has He removed our rebellious acts from us.** (Psalm 103:12)

Surely God is my salvation.

**I will trust and will not be afraid.** (Isaiah 12:2)

Lord, I love the house where you live,  
**the place where your glory dwells.** (Psalm 26:8)

Give thanks to the Lord! Proclaim His name.  
**Declare his deeds among the peoples.** (Isaiah 12:4)

Sing to the Lord, for He has done amazing things!  
**Let this be known in all the earth!** (Isaiah 12:5)

Blessed be the Lord, the God of Israel,  
**from eternity to eternity. Amen and Amen.** (Psalm 41:13)

O almighty, everlasting God, you have joined together all believers into one spiritual temple in Christ. Come and be present by your Word in this place of worship and instruction. Make it a workshop of your Spirit in which your people, both young and old, will be made wise for salvation and trained for willing service in this life to the glory of your name; through Jesus Christ our Lord, who lives and reigns with you and the Holy Spirit, one God, now and forever.

**Amen.**

Please be seated.

## PSALM OF THE DAY

Psalm 84

### *Refrain*



### *Psalm tone*



How lovely is your dwelling place,\*  
O Lord Almighty!

My soul yearns, even faints,\*  
for the courts of the Lord.

Blessed are those who dwell in your house;\*  
they are ever praising you.

### ***Refrain***

Better is one day in your courts\*  
than a thousand elsewhere;

I would rather be a doorkeeper in the house of my God\*  
than dwell in the tents of the wicked.

O Lord Almighty,\*  
Blessed are they who trust in you.

**Glory be to the Father and to the Son\*  
and to the Holy Spirit,  
as it was in the beginning,\*  
is now, and will be forever. Amen.**

### ***Refrain***

## FIRST LESSON

1 Chronicles 29:10-18

As David and the people of Israel provided generously for the building of the temple in Jerusalem, David confessed that both the treasure given for the work and the hearts moved willingly to give came from the Lord. As we consider the Lord's goodness in providing us with this new space for worship and ministry, we also ask the Lord to keep us loyal to Him.

## CANTICLE

This Is the Day

The canticle will be played once all the way through.

Then the Junior Choir will sing the entire canticle.

The Adult Choir will sing the canticle with the Junior Choir a second time.

After that, the congregation will sing the canticle with the choirs for a third time.



This is the day the Lord has made;  
let us re - joice and be glad in it!  
This is the day the Lord has made;  
let us be glad, be glad, be glad, be glad  
and re - joice in it!

## SECOND LESSON

1 Peter 1:23 - 2:9

As we set apart this new building for the work of the Lord, we remember the Lord has also set us apart from the darkness of the unbelieving world through the living and enduring Word of God, that we might proclaim His praises to those around us.

## CHOIR ANTHEM

Built on the Rock

- 1) (Choir) Built on the Rock the Church shall stand even when steeples are falling.  
Jubilate Deo!  
Crumbled have spires in every land; bells still are chiming and calling,  
Jubilate Deo!  
Calling the young and old to rest, but above all the souls distressed,  
Longing for rest everlasting.  
Jubilate Deo!
  
- 2) (Choir) Surely in temples made with hands, God, the Most High, is not dwelling;  
High above earth His temple stands, all earthly temples excelling.  
Yet He who dwells in heav'n above chooses to live with us in love,  
Making our bodies His temple.

### Stanza 3 (Choir and congregation):



We are God's house of liv - ing stones, Built for His  
own hab - i - ta - tion. He through bap - tis - mal  
grace us owns Heirs of His won-drous sal - va - tion.  
Were we but two His name to tell, Yet He would  
deign with us to dwell With all His grace and His fa - vor.

Please stand.

### GOSPEL LESSON

*Matthew 16:13-19*

Jesus promises to build His Church on the solid rock of Peter's confession that Jesus is the Christ, the Son of the living God. What makes our new building most spectacular is the purpose to which we are dedicating it: to proclaim the good news of Christ, our solid Rock.



C: Praise be to you, O Christ!

Please be seated.



# HYMN OF THE DAY

*For Builders Bold Whose Vision Pure / #775*



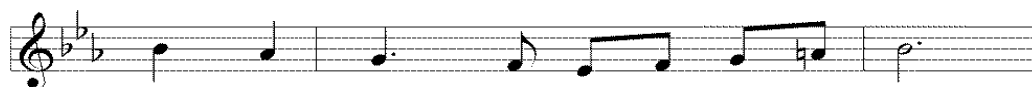
1 For build - ers bold whose vi - sion pure  
2 As here they raised a soar - ing spire  
3 Here saints new - born you gen - er - ate  
4 We come, O Lord, in - her - i - tors



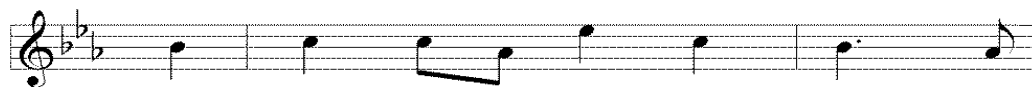
Saw more than brick or stone,  
Which thrusts toward worlds a - bove,  
Through wa - ter and the Word,  
From those whose work is done.



Who laid in hope foun - da - tions  
So may our prayers, like tongues of  
Through bread and cup com - mu - ni -  
Lord, make us now con - trib - u -



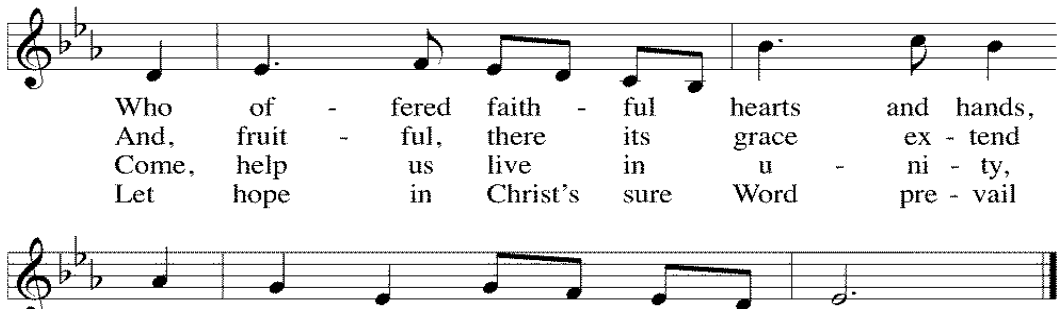
sure With Christ the cor - ner - stone;  
fire, Leap kin - dled by your love.  
cate The gift of Christ the Lord.  
tors To years be - yond our own.



For those who hon - ored your com -  
And let your liv - ing Word de -  
We gath - er, Christ's own fam - i -  
Let faith's en - kin - dled flame not



mands And trust - ed your strong Word,  
scend As seed - on wait - ing hearts  
ly, Christ's meal of love we share.  
fail; Let love's best gifts in - crease.



Who of - fered faith - ful hearts and hands,  
 And, fruit - ful, there its grace ex - tend  
 Come, help us live in u - ni - ty,  
 Let hope in Christ's sure Word pre - vail

We give you thanks, O Lord.  
 To earth's most dis - tant parts.  
 Each oth - er's bur - dens bear.  
 Till earth and time shall cease.

**SERMON**

1 Peter 1:23 - 2:9

*Theme: Built for Praise*

## **CREED**

**I believe in God the Father Almighty, maker of heaven and earth.**

**I believe in Jesus Christ, his only Son, our Lord,  
who was conceived by the Holy Spirit,  
born of the virgin Mary,  
suffered under Pontius Pilate,  
was crucified, died and was buried.**

**He descended into hell.**

**The third day he rose again from the dead.**

**He ascended into heaven**

**and is seated at the right hand of God the Father almighty.**

**From there he will come to judge the living and the dead.**

**I believe in the Holy Spirit,  
the holy Christian Church, the communion of saints,  
the forgiveness of sins,  
the resurrection of the body,  
and the life everlasting. Amen.**

## **OFFERING**

Members of Peace have committed to supporting the mission of this congregation with their finances.

Our guests are not expected to participate. We do ask that you fill out a “Connection” card from the seat-pocket in front of you and drop it in the offering plate. Thank you!

If you would like to make a one-time **offering by text**, please see the information at the end of this printed service.

## **OFFERTORY - EASTSIDE BELL CHOIR**

*Fantasia on “Ebenezer”*  
Arr. Tammy Waldrop

Please stand.

## **RITE AND PRAYER OF DEDICATION**

Brothers and sisters in Christ, we have come together to set apart this structure for the worship of the almighty God and for the building up of the body of Christ. Our prayers rise to the throne of God our Father through the intercession of Jesus Christ our Lord and in the power of the Holy Spirit.

To the glory of God our Father who created and preserves us;  
To the honor of His Son who loved us and gave Himself for our salvation;  
To the praise of the Holy Spirit who has called us by the Gospel, sanctifies us, and keeps us in the faith:

**We dedicate this building.**

For the worship of the Triune God, the proclamation of His Word and the administration of His Sacraments:

**We dedicate this building.**

For the instruction of souls with Scripture in all its fullness;  
For building on the baptisms of our children and nurturing them to the reception of the Lord's Supper:

**We dedicate this building.**

For reaching out to our community and making disciples according to Christ's Great Commission;  
For teaching the unchanging truth to the people of today and the generations of tomorrow;  
As a place where the body of Christ may gather to encourage each other and to praise Christ's name:

**We dedicate this building.**

For the Christian influence of our teachers in every subject matter;  
For the promotion of righteousness, godliness and lives filled with fruits of faith;  
As a refuge of prayer and guidance by the Spirit:

**We dedicate this building.**

As a place where our heavenly goal is continuously held before us;  
Where souls, tired and worn by the struggle with sin, may be refreshed by God's grace;  
Where those nearing their time of departure may be lifted up and those grieving the loss of the departed may be comforted:

**We dedicate this building.**

Let us pray...

Almighty God, Lord of hosts, the heavens, even the highest heavens, cannot contain you. Yet you are pleased to have on earth a place where you meet your people who gather in your name.

**We thank you, Lord.**

For your kindness in sending your Spirit, in moving your people to fulfill your mission, to organize, to give, to volunteer, to cooperate, to sacrifice, and to encourage - all for the common purpose of making disciples of Jesus,

**We thank you, Lord.**

For your Word and Sacrament, for ready shepherds and instructors, for faithful leaders willing to shoulder responsibility, for all who support and combine their efforts to carry out the Gospel ministry,

**We thank you, Lord.**

For this happy day, that you have permitted us to see the fruition of many years of planning and contribution,

**We thank you, Lord**

O Triune God, Father, Son and Holy Spirit, to you we dedicate this building, along with all that we are and have. Hear us and bless us according to your will.

May God grant us His grace in Christ.

**May God grant us His grace in Christ.**

**Our Father in heaven,**  
**hallowed be your name,**  
**your kingdom come,**  
**your will be done on earth as in heaven.**  
**Give us today our daily bread;**  
**Forgive us our sins, as we forgive those who sin against us;**  
**Lead us not into temptation, but deliver us from evil.**  
**For the kingdom, the power and the glory are yours now and forever. Amen.**

Please be seated.

# HYMN

## Shepherd of Tender Youth / #515



1 Shep - herd of ten - der youth, Guid - ing in  
 2 You are our ho - ly Lord, Christ, the in -  
 3 You are our great High Priest; You have pre -  
 4 Oh, ev - er be our guide, Our shep - herd  
 5 So now and till we die Sound we your



love and truth Through de - vious ways, Christ, our tri -  
 car - nate Word, Heal - er of strife. You did your -  
 pared the feast Of ho - ly love; And in our  
 and our pride, Our staff and song. Je - sus, O  
 prais - es high And joy - ful sing; In - fants and



um - phant King, We come your name to sing  
 self a - base That from sin's deep dis - grace  
 mor - tal pain None calls on you in vain;  
 Christ of God, By your en - dur - ing Word  
 all the throng Who to your Church be - long



And here our chil - dren bring To join your praise.  
 You might thus save our race And give us life.  
 Our plea do not dis - dain: Help from a - bove!  
 Lead us where you have trod; Make our faith strong.  
 U - nite to swell the song To Christ, our King.

Please stand.

## PRAYER

Let us pray... Almighty God, grant to your Church the Holy Spirit and the wisdom that comes from above. Let nothing hinder your Word from being freely proclaimed to the joy and edifying of Christ's holy people, so that we may serve you in steadfast faith and confess your name as long as we live, through Jesus Christ our Lord who lives and reigns with you and the Holy Spirit, one God, now and forever.



## BLESSING

The Lord bless you and keep you.  
The Lord make his face shine on you and be gracious to you.  
The Lord look on you with favor and give you peace.



Please be seated.

**PEACE LUTHERAN SCHOOL (K-8)**

*God's Word Is Our Great Heritage*

## GREETING & ANNOUNCEMENTS

## ACKNOWLEDGEMENTS

<b>Presider</b>	Rev. Luke C. Werre
<b>Sermon</b>	Rev. Shaun Arndt
<b>Organists</b>	Sarah Bilitz
	Lynn Proeber
	Lisa Schoenherr
	Jennifer Werre
<b>Adult Choir</b>	Joan Eggert (dir.)
<b>Junior Choir</b>	Lisa Schoenherr (dir.)
<b>Brass</b>	Erin Gleason (dir.)
<b>Peace School Children</b>	Lisa Schoenherr (dir.)
	Kyle Raymond
	Eric Uher
<b>Eastside Bell Choir</b>	Jessica Sheeks (dir.)

*Thank you to everyone at Peace who contributed to the building project!*

*It is a testament to the many and varied gifts God has given His church,  
that there were so many people involved in this project that it would be  
impossible to create an accurate list of all who contributed their  
time, talents and treasures.*

*This Is the Day, Psalm 118; adapt. Composed by Leon C. Roberts  
Built on the Rock, Copyright @2004, Concordia Publishing House, St. Louis, MO. All  
rights reserved. Used by permission.  
Hymn 775, Text: Herman G. Stuempfle Jr., 1923-2007 @1993 GIA Publications, Inc. All  
rights reserved. Used by permission.; Setting: Kermit Moldenhauer, b. 1949 @2006  
Kermit Moldenhauer. All rights reserved. Used by permission.*



# ANNOUNCEMENTS

## **WE ARE SO HAPPY YOU ARE WITH US TODAY!**

Please stay for light refreshments after the service!

## **SEE THE NEW FACILITIES**

Self-guided tours of our facilities are encouraged! Please feel free to walk around! Staff members are located throughout the building to answer questions and provide information about the facilities.

## **YOU CAN MAKE A ONE-TIME OFFERING ON YOUR PHONE**

If you wish to make a one-time offering with a text message, send a text message to **(608)480-1612** with the amount you would like to contribute (example: 25). Within a few seconds, you'll be sent a text with a link to register. Click on the link and enter your name (the name on your debit card) and debit or card information. Once your registration is complete, you will receive a text verification and a receipt of your donation via email. For future giving, send a text with the amount you wish to give, and it will process automatically! You can even text "repeat" to make it a recurring donation. We thank you for supporting our ministry.

## **SOME FACTS & FIGURES**

- In 2006, 5 classrooms and a gymnasium, all totaling 17,620 sq. ft., were dedicated.
- In 2014, a one-room expansion added 1,100 sq. ft.
- The newly completed construction which we are dedicating today adds 31,143 sq. ft. to the campus.
  - School wing: four new classrooms for an additional 11,798
  - Grow in Peace Learning Center: 9,310
  - Worship Space & offices: 10,035

## **THIS WORSHIP SPACE IS A STEPPING STONE**

Prior to this, our ministry had been divided between two campuses. Our recent construction enables us to carry out our mission together on one campus.

The worship space you are in, beautiful as it is, is not a permanent place for worship. A future phase of construction will involve building a sanctuary along the west side of this room. This room will then function as a fellowship hall.

## **DID WE BRING OUR BAPTISMAL FONT & ALTAR FROM WINDSOR STREET?**

The font and altar at 232 Windsor St. were constructed of brick, stone block and mortar and are one piece with the floor. They are impossible to remove without major reconstruction.

The platform, font, pulpit and altar you see before you were planned and crafted by Peace members Mark Blahnik and Marty Larson.

Three significant symbols from the former sanctuary have been incorporated into the design: the shell, the Bible and the cup with a spear of wheat. Identical symbols made of wood on a much larger scale were displayed along the upper wall of the nave in the previous sanctuary. These have been scaled down to keep a visual connection with our heritage as a congregation.

## **THE STATUE OF JESUS**

The statue at the center of our worship space was brought here from the church at 232 Windsor St., where it had been affixed to the wall just above the altar. It remains the focal point of our worship. Here are some things to note:

- The statue is made of a type of fiberglass, and while it is heavy, it is not as heavy as a person might think.
- It is mounted on a table which serves as a pedestal. Offerings and flowers can be placed on this pedestal.
- The statue represents the risen Christ.
- It also reminds us of the ascended Christ as He looks down and blesses us from God's right hand (Luke 24:51).
- The nail marks are visible in his hands (John 20:27).
- The risen and ascended Christ comes to us through Word and Sacrament.
- Behind the statue is a screen of blue. Blue is the color of the sky as we look in anticipation for Christ's return. Blue is also Peace's school color.

## THE SUSPENDED CROSS

Suspended above the pulpit, font and altar, is a large cross. A dominant feature, it overshadows everything. It serves as a constant reminder that only by Christ's sufferings and death on the cross are we saved. There first had to be an atoning sacrifice before there could be a victorious resurrection. The fruits of Christ's death on the cross (forgiveness and salvation) are given to us through Word and Sacrament. The cross identifies us as Christians - it overshadows our earthly lives. We must bear our own cross as we follow Christ and die to sin (Luke 9:23). But we do not lose heart because we are also God's redeemed people by means of Christ's cross. As we lift our eyes up to behold it, we are reminded of our eternal destination because of the cross.

## THE ALTAR

The altar represents the body of Christ. Therefore we don't put offering plates or flowers on it. Only the bread and wine for the Sacrament are placed on it, along with two candles. The lit candles signify that we believe in the "real presence" of Christ's body and blood in the bread and wine.

When the minister speaks the Words of Institution for the Lord's Supper, he stands behind the altar facing the people as though offering starving beggars a sumptuous feast at this table - inviting sinners to fill themselves up on Christ's righteousness and salvation.

When the minister and congregation offer prayers to God, he faces the altar. It is only on the basis of Jesus' bodily sacrifice that our prayers are heard in heaven.

## WHY IS THERE A CROSS BY THE BAPTISMAL FONT?

This is called a "processional cross." It is sometimes used to lead the worship participants into the sanctuary at the beginning of a service. It reminds us that Christ is entering this place through Word and Sacrament. It also visually reminds us that we follow Christ wherever He leads us.

Having the processional cross stand next to the baptismal font reminds us of this important Bible truth: *All of us who were baptized into Christ were baptized into his death. We were therefore buried with Christ through baptism into death in order that, just as Christ was raised from the dead through the glory of the Father, we too may live a new life* (Romans 6:3-4).

## **OTHER ITEMS**

The organ and the piano were brought here from the previous sanctuary.

The white speakers affixed to the wall are for the microphone & sound system.

The black speakers are for the organ. In addition, there are two large boxes on either side painted the same color as the wall. These are “woofer” speakers for the lower, deeper sounds of the organ.

## **STAINED-GLASS WINDOWS**

In the spring of 2018 Peace members donated \$13,000 to have the stained glass windows removed from the church on Windsor St. and crated. They are currently in storage. Plans will be developed to incorporate them into our new campus in the future.

## **THE WORSHIP SPACE ALSO SERVES AS THE SCHOOL LUNCHROOM**

The east wing of the worship space is equipped with large moveable wall panels. When engaged, these create a closed-off room. Chairs are stacked and tables are set up. Here the school children eat lunch during the week. From the kitchen we serve a full hot lunch program. This temporary room remains closed off during the Monday night worship service.

## **FACILITY EXPLANATION**

by Brook Borelli, A2K Project Architect

When A2K began working with the building committee on the design of the expansion, we were provided with a number of masterplans put together over previous years and a binder filled with narratives, programs, and scope descriptions for each room. As we worked with the building committee, it became apparent that the previous masterplan and spaces it contained no longer fit the needs of the congregation. In an effort to be more resourceful with the building spaces, our new masterplan focused on condensing the design by providing spaces that could serve multiple functions.

The primary space you will see this occurring is in the large space on the west end of the building. Day to day, one-third of this space will be set up as a cafeteria for the K-8 children. For church services, the cafeteria tables will be removed and this space will be converted into seating for worship. Moveable walls allow one-third of the space to be closed off from the larger worship area for Bible study and meetings.

It was important to the building committee for the space to have more of a church feel compared to the rest of the building. The flooring in this space has a warm feel with the wood-look floor and interesting detail with the stone-look inlay. The paint colors are deeper and richer to fit the larger space. The vaulted ceilings bring a level of grandness one would expect in a church. Faux wood beams were added to create another level of detail and warmth. Various levels of ambient and spot lighting fit the multiple needs and uses of the space.

The conference room across the hall from the worship space is also set up to be used as the church library, meeting room, and parent's room during worship services. The room has internal windows so parents can directly view services.

One space that was requested to be added adjacent to the gym was a stage. Originally this was planned to be more of a traditional stage that is raised off the floor by a few feet. By putting the "stage" at the same level as the rest of the building, it eliminated the need to add stairs and a ramp to access it. It also allows it to be used for a wider variety of functions, including a play space for the ECLC during inclement weather.

Technology and sustainability were factors in the design. Wireless access points were provided throughout the building to provide students and staff with reliable WIFI. All light fixtures in the building are LED, which are very energy efficient and long lasting. The plumbing fixtures are low-flow type fixtures to reduce water usage in the building. The mechanical systems are also designed for efficiency and are tied into the building’s energy control system. The building’s exterior consists of brick and engineered wood siding, which are both low maintenance, durable finishes. The window frames are made of a composite material that is strong and reduces thermal transfer from the exterior. The windows have a Low-E coating that helps control heating and cooling costs.

**CONSTRUCTION CONTRACTORS & SUB-CONTRACTORS**

A2K, division of Schroeder & Holt Architects	Hickory Landscaping - Landscaping
Catalyst Construction	Madison Crushing and Excavation – Earthwork, Site Utilities, Paving
Knight Barry Title Group	Merit Painting – Painting
McFarland State Bank	Middleton Construction – Concrete
Applewood Drywall – Drywall	Nonn’s Flooring – Flooring
Austad and Son – Acoustical Ceilings	Prairie Glass – Glass and Glazing
Blair Fire Protection – Fire Protection	Pure Mechanical – HVAC
Block Iron – Door, Frame and Hardware	Quest Engineering – Millwork, Casework
Cardinal Fabricating – Steel	Rural Masonry – Masonry
Chase Lumber – Lumber	Streamline Construction – Finish Carpentry
Current Electric - Electric	Wenger Roofing and Sheet Metal – Roofing, Siding
H&H Plumbing Services – Plumbing	